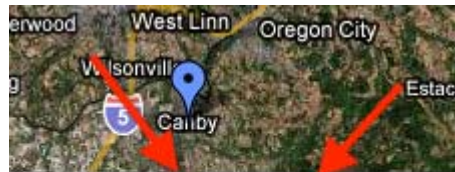


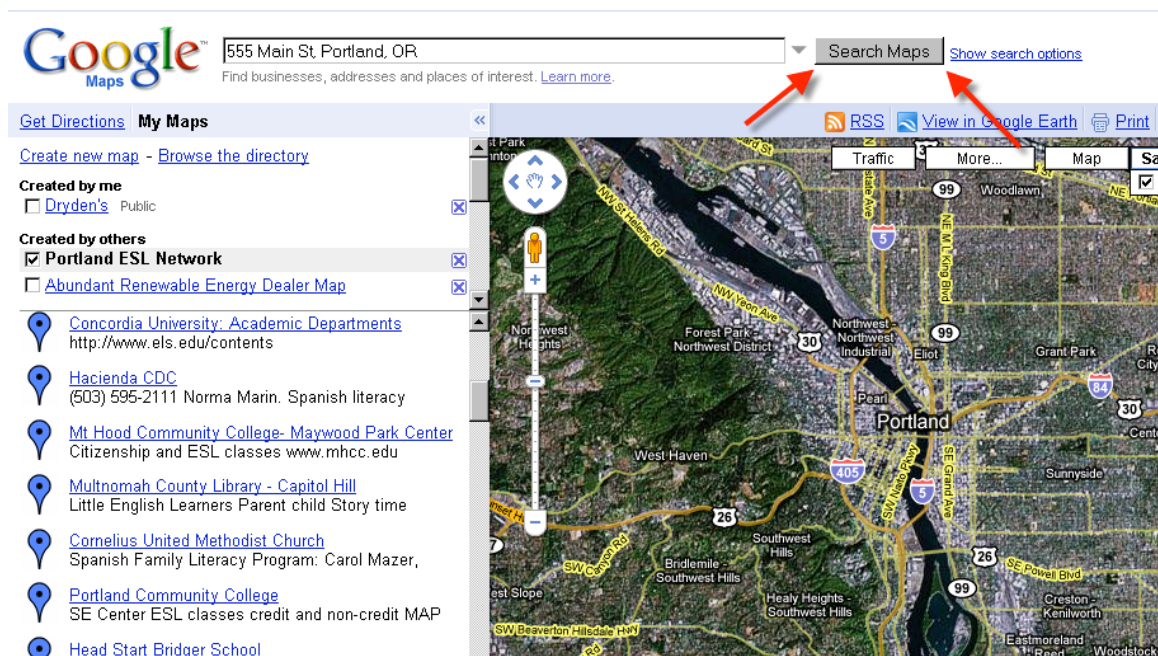
How to add your class to the Portland ESL Network Map

1. Sign into portlandesl.pbwiki.com
2. Click **View Larger Map** (Located under the Google map on the frontpage)

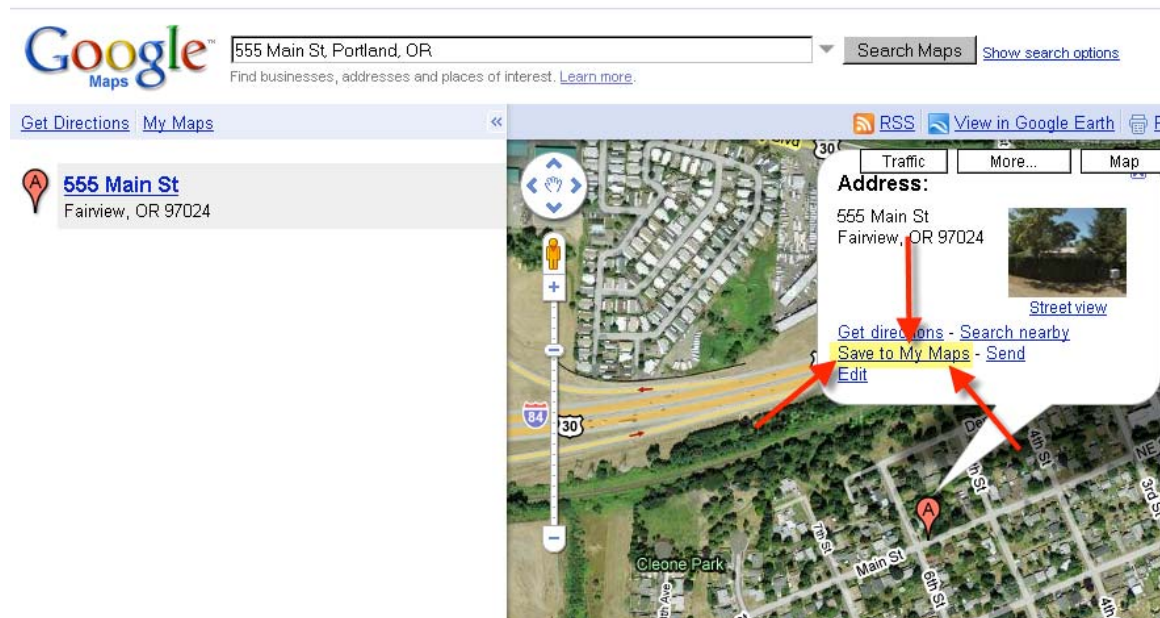


View Larger Map

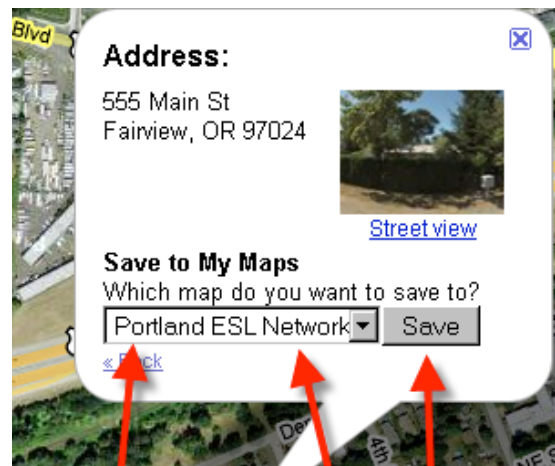
3. Type address in search maps bar and click on **Search maps** button
 - If an “at this address” shows up and it is the same location you are featuring, you may click on that link and the phone number and address will be automatically added to your entry.



4. In the Pop-up window on the map Choose: **Save to my maps**



➤ Which map do you want to save it to? Choose: **Portland ESL Network**



- Click **Save** after adding the location
- Edit details in the box inside the map.
- Details include:
 - Agency name
 - Time and Dates of classes (*note if class is ongoing or has a specific ending date. Please include the year, and plan on removing the class when it is over if the class is not ongoing*)
 - Cost
 - Who is eligible to attend the class
 - Additional info such as free childcare
 - Contact information and website *if applicable*

5. Press **Done** and **Save** in the left tool bar.

removed. [Undo](#) | [Close](#)

[Create new map](#) - [Browse the directory](#)

Created by me
☐ Dryden's Public

Created by others
☒ **Portland ESL Network**

[Collaborate](#) [Import](#) [Done](#) [Save](#)

Title
Portland ESL Network

Description
This map aims to provide the most up to date and comprehensible information regarding ESL Classes and service

[IRCO Skill Center](#)
Refugee Services 10301 NE Glisan Street Portland,

[Trinity Lutheran Church & School](#)
ESL and Computer classes, child care provided

